

Study visit Leuven

Welcome meeting



UC Leuven
Limburg
MOVING MINDS

Liesbeth Spanjers



INSPIRED BY A PUBLIC SCHOOL STUDENT WITH DISABILITIES



© 2002 MICHAEL F. GIANGRECO, ILLUSTRATION BY KEVIN RUELLE
PEYTRAL PUBLICATIONS, INC. 952-949-8707 WWW.PEYTRAL.COM

CLEARING A PATH
FOR PEOPLE WITH SPECIAL NEEDS
CLEARS THE PATH FOR EVERYONE!



Wifi and mobile phone

- Name of wifi: ucll-event
- Log in: international
- Liesbeth: 0032 494 456 939



Aims during study visit (1)

- More input on Inclusion and Universal Design for Learning
 - Presentation and discussion with key staff (Tue)
 - Workshop on Universal Design for Learning (Wed)
 - Visit KULeuven (Thu)



Aims during study visit (2)

- Working on master plans
 - Team meetings on Monday, Tuesday, Thursday and Friday
 - Getting closer to finalisation of the master plans
 - New input about inclusive teaching, learning and assessment



Aims during study visit (3)

- Filming
 - Workshop on procedures for filming (Mon)
 - Filming and editing (Wed and Fri)

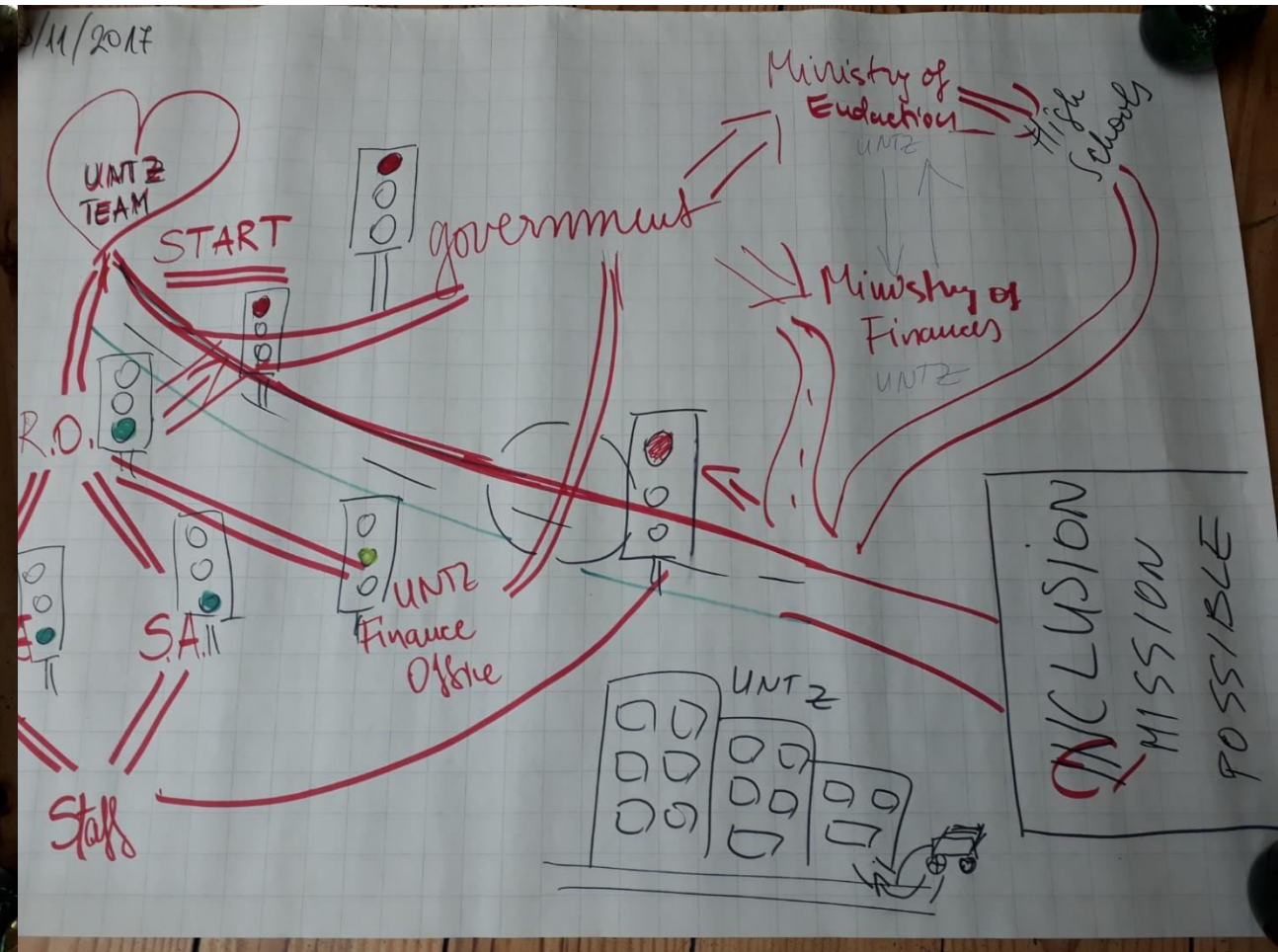
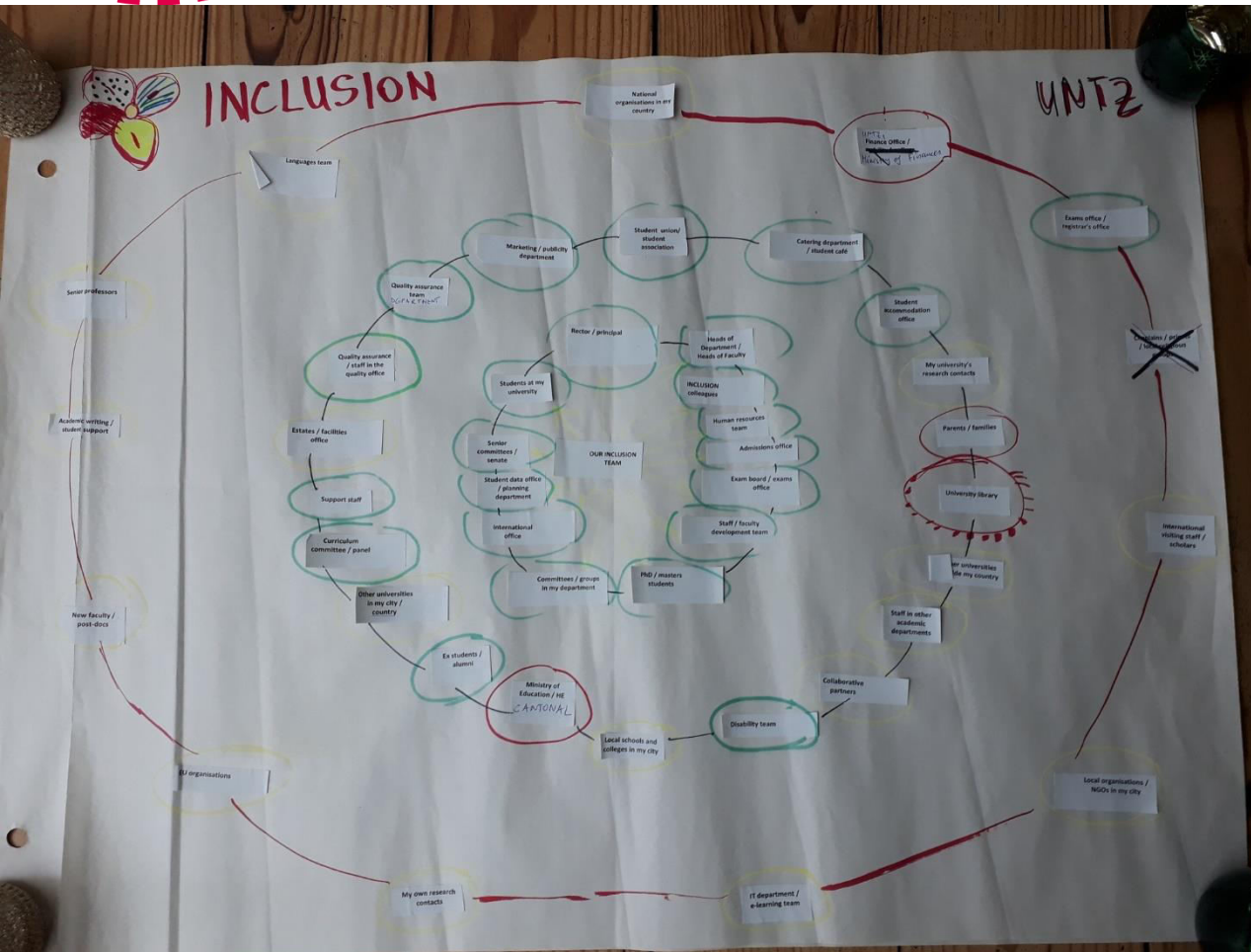


Final meeting (Friday)

- Report of study visit to identify “best practice” (proforma to be supplied, 1500 max word count!)
- Share key policy / strategy documents and photos of your visit on our INCLUSION Moodle site
- Film
- (Evaluation study visit)

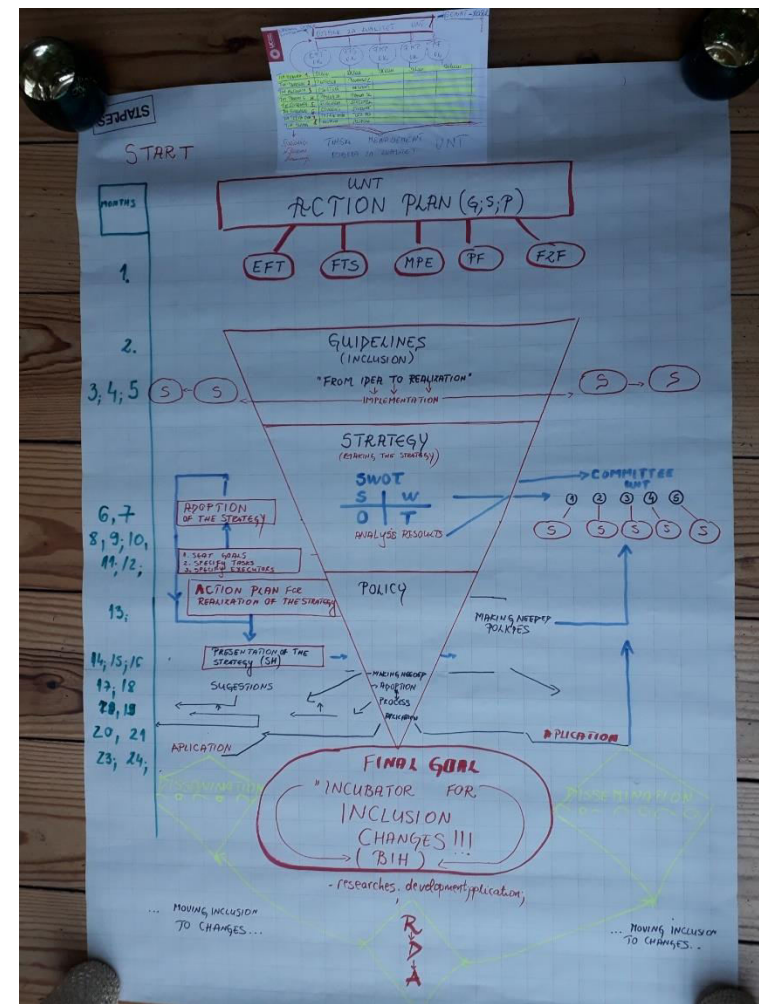
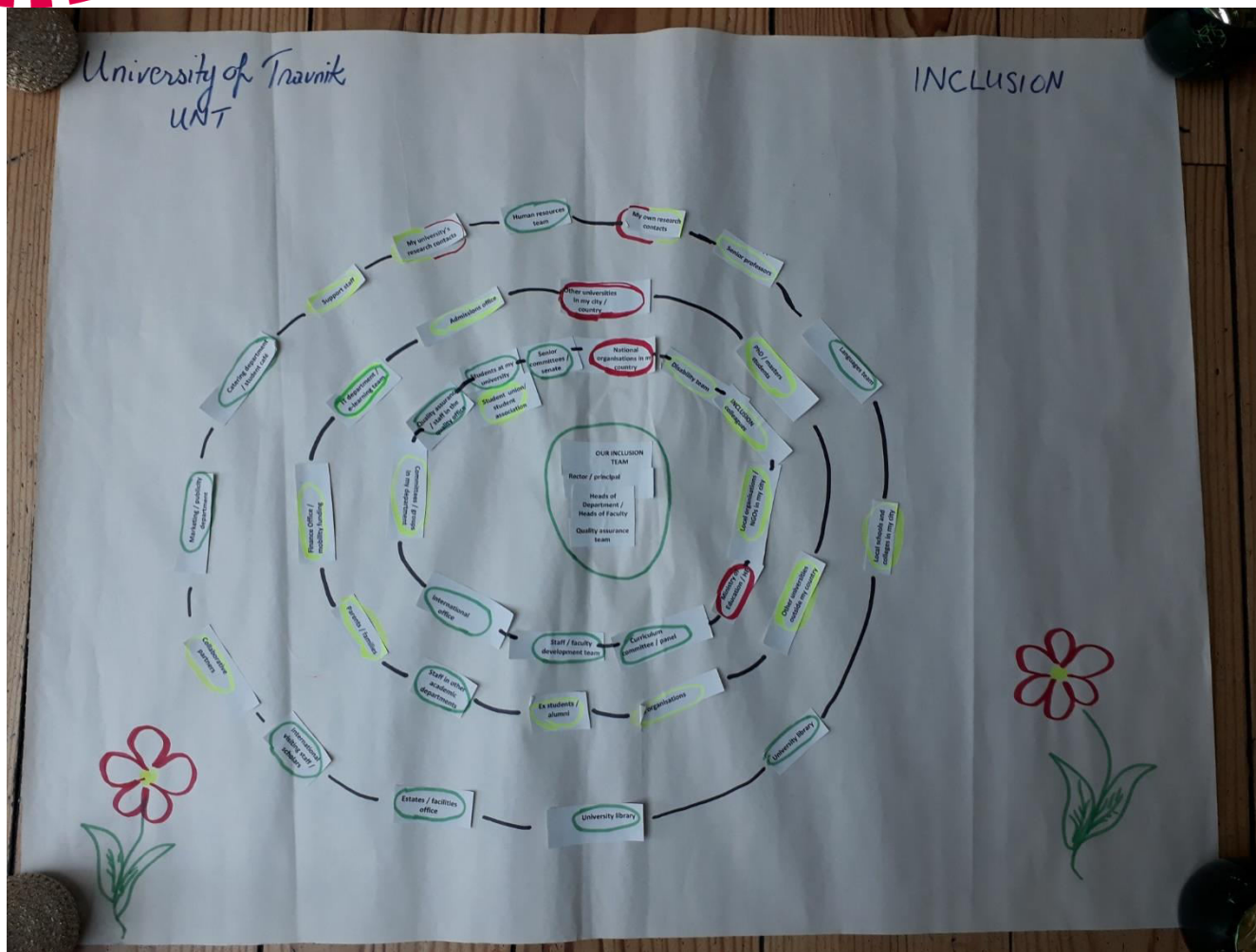


Back to November (UNTZ)





Back to November (UNT)





Where are we now?

- Which steps have you taken since November 2017?
- What are you proud of in this stage of the project?
- What do you want to achieve this week?
- What do you worry about?



Where are we going? (1)

- **Introduction**
- **The management of inclusive practice:**
 - Roles and responsibilities
 - Funding / finances
 - Admissions processes / outreach plans
 - Quality assurance of inclusive practice
- **Institutional support for inclusive practice**
 - Faculty training / staff training
 - Support for learning (staffing / facilities)
 - E-learning and technology
 - Spaces for learning / library and study facilities



Where are we going? (2)

- **Inclusive approaches to learning, teaching and assessment**

- Learning and teaching guidelines

- The inclusive curriculum

- Inclusive approaches to assessment / examinations

- **Additional information**

- References and websites

- Key organisations which offer advice and support for faculty / institutions

- Ministry contacts (?)

- **Appendix**

- Timeplan for 2018-2019

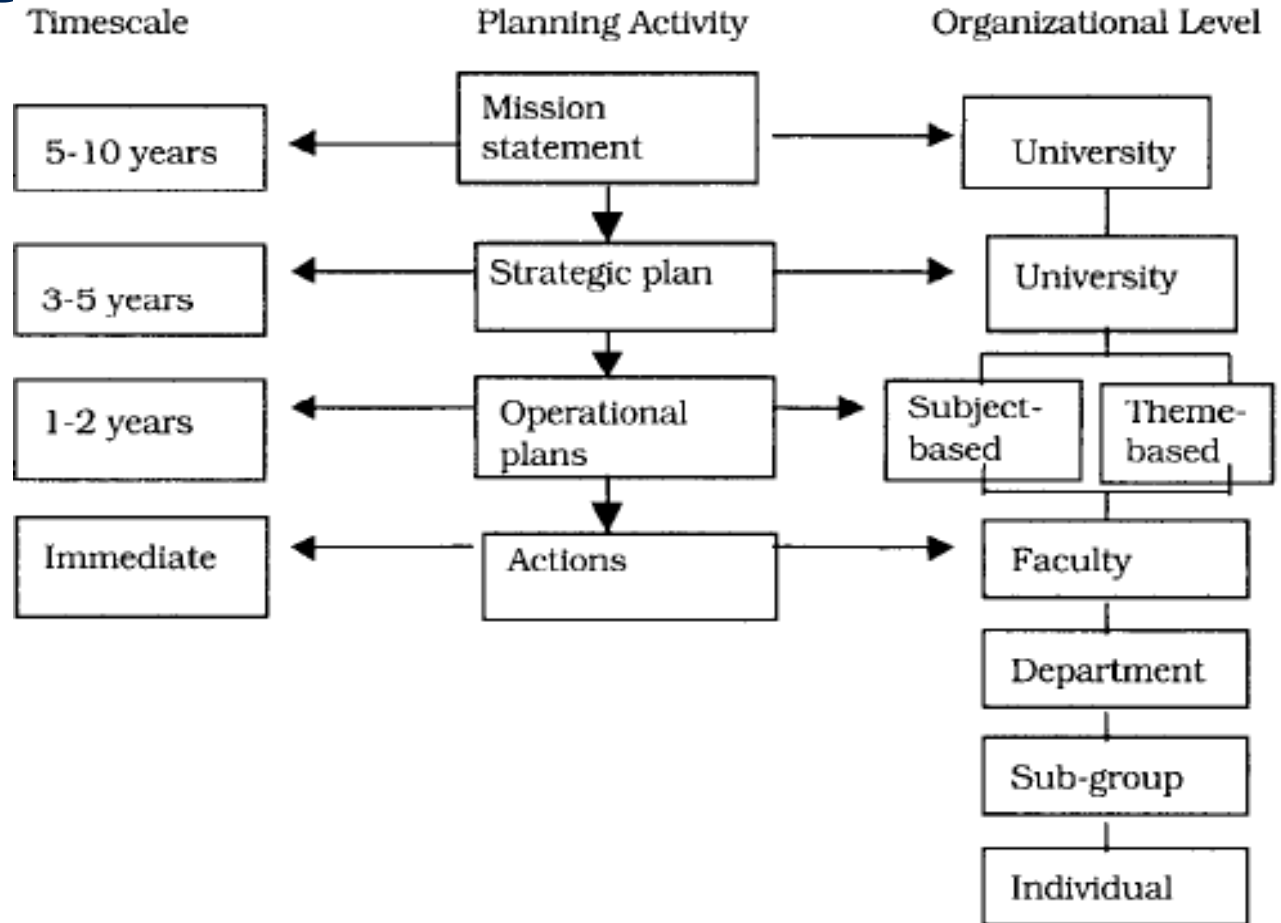
The Planning Structure

The internal planning structure of a university is operating at various levels within the institution.

There are three key levels of planning:

- Mission Statement
- Strategic Plan
- Operational Plans

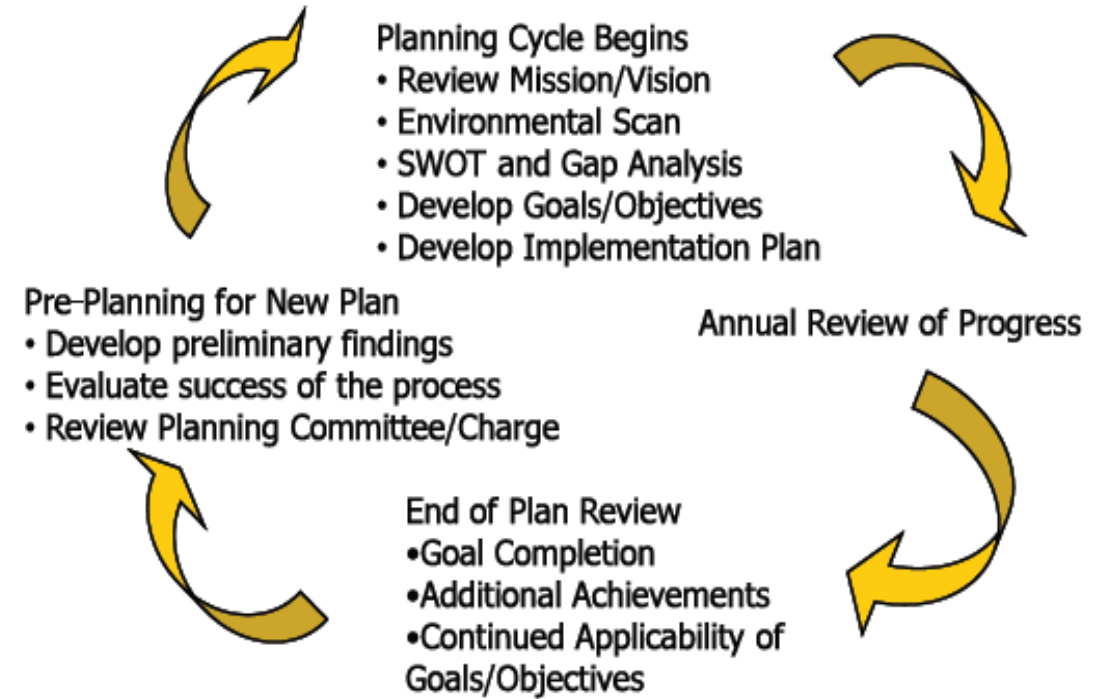
Figure 2. The structure of organizational plans.



Components of a Strategic Plan

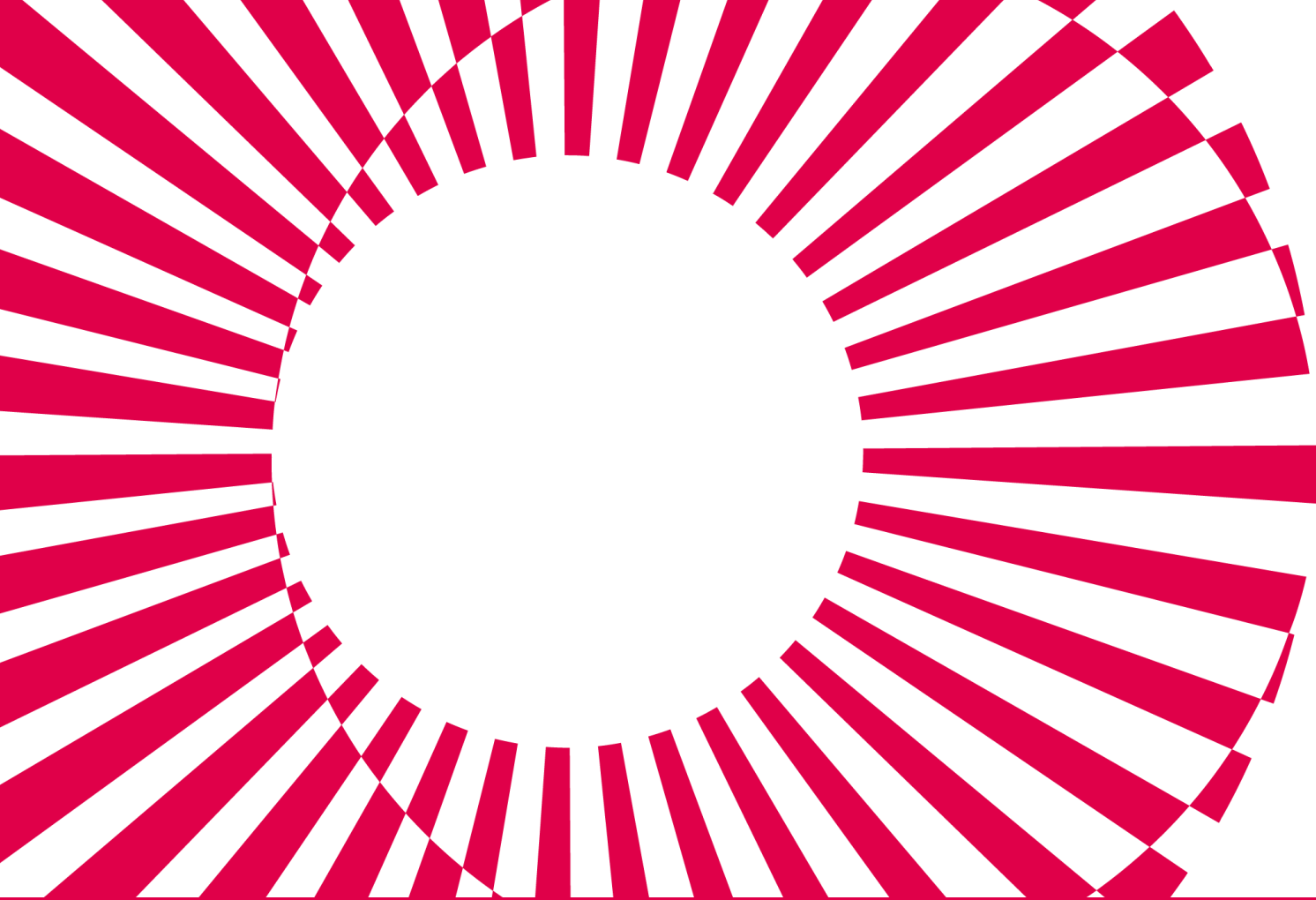


Process to Develop, Implement, and Review a Planning Process





Social evening?



UC Leuven
Limburg
MOVING MINDS

Student Services @ UCLL



Student Services

Funded and regulated by the government. Each university college has to offer student services.

Objectives:

- strengthen the social character of the university colleges
- promote equal access and participation

Student services pursue that objective by:

- providing financial and social services
- for every student regardless their social, cultural or financial background



Objective

- To support and encourage improvements in the number and/or proportions of students in higher education from low income and other under-represented groups.
- To reduce as far as practicable the barriers to higher education for students from low income and other under-represented groups.
- To support and encourage equality of opportunity through the provision of clear and accessible financial information for students, their parents/caretakers and their advisers.
- To activate social networking, sport activities and cultural participation for each student



Finance

Budget 2017

€1,847,917 for student services

€4,30/credit

- average €205/student



Acitvities Student Services

Each university college has activities in the following fields but can prioritize with its own emphasis:

- Social service
- Medical and psychotherapeutic service
(including service for students with disabilities)
- Housing service
- Catering
- Mobility service (in terms of transport to and from campus)
- Social networking
(including cultural activities and sports)



Social Service

Students can ask any question of a practical, legal or financial nature.

- Information
- Mediation
- Financial help
- Student employment service



Social Service: information and mediation

- Scholarships, child support, health insurance, aid of the social services of the communes, unemployment fees...
- Mediation with appropriate institutions, between students and their social network...



Social Service: Financial help and employment

- Financial support: student loans, financial aid for student expenses (books, housing, public transport, student materials...), reduction on tuition fees...
- Complementary to the Belgian social security
- Complementary to scholarships of the Flemish government
- Employment service: jobs for students, database, information about the legislation and regulations



Social Service

- 228 students get an extra grant avg/student €625
- 29 students get a long term loan avg/student €1202
- 26 students get a short term loan avg/student €661
- 133 students get an advanced payment of the grant of the government avg/student €1082



Psychotherapeutic help

- Students dealing with personal or psychological problems can turn to the student services for professional help
- The therapists and psychiatrists run various training and therapy sessions, adapted to the individual needs of the student
 - e.g. performance anxiety, procrastination, social skills...
- They can offer assistance for a wide variety of psychological, relational... complaints
 - e.g. bullying, loneliness, divorce, addiction, depression, relationship problems, discrimination, death of a relative,...



Psychotherapeutic help

- Individual help
 - 201 students
 - 1020 sessions with a counselor
- Group help
 - Assertivity, performance anxiety, Mindfulness



Service for students with disabilities

Students with impairments that limit their ability to participate in academic activities can be assisted.

e.g. hearing impairment, vision impairment, physical disability, chronic illness, learning disabilities (including dyslexia, dyscalculia...), psychiatric disabilities (including Autism Spectrum Disorder, Attention Deficit/Hyperactivity Disorder).

- Assisted living accommodation
- Guidance and financial support
- Psychosocial support
- Advice and guidance in education facilities



Housing Service

- Offer of affordable and quality housing
- Advice and mediation in possible conflicts
- Information regarding the safety, rights and responsibilities as a tenant
- Assisted living accommodation
- Promote social activities



Housing Service

- Subsidized rooms
 - 243 rooms
 - Renting prices based on income of parents can vary between: €113 - €284
 - Average renting price for our students €160
- Assisted living
 - 33 students provide assistance
 - 8 students with a disability are in need of assistance



Catering

- Restaurants: hot & cold meals, sandwiches, soup, drinks & snacks
- Fair prices for students
- Promote healthy food
- Sustainable food



Mobility

- Raise awareness about mobility
- Finance affordable public transport
- Bicycle rental service
- Promote projects on sustainability and ecologically responsible lifestyles



Mobility

- Buspass
 - 5437 buspasses sold for €25 / academic Year
- Bicycle rent
 - Second hand bikes 634 students rent a bike for €25 /academic year



Social Networking

- Sports and cultural activities: own organisation, discounts, information...
- Sorority and student participation support



Future goals and challenges

- Financing the social services: “closed envelope”
- Graduate degrees
- Partnerships
- Safeguard structural knowledge exchange
- International benchmarking
- Education access for refugees



Thank You!

Manu Nesari

Manu.nesari@ucll.be

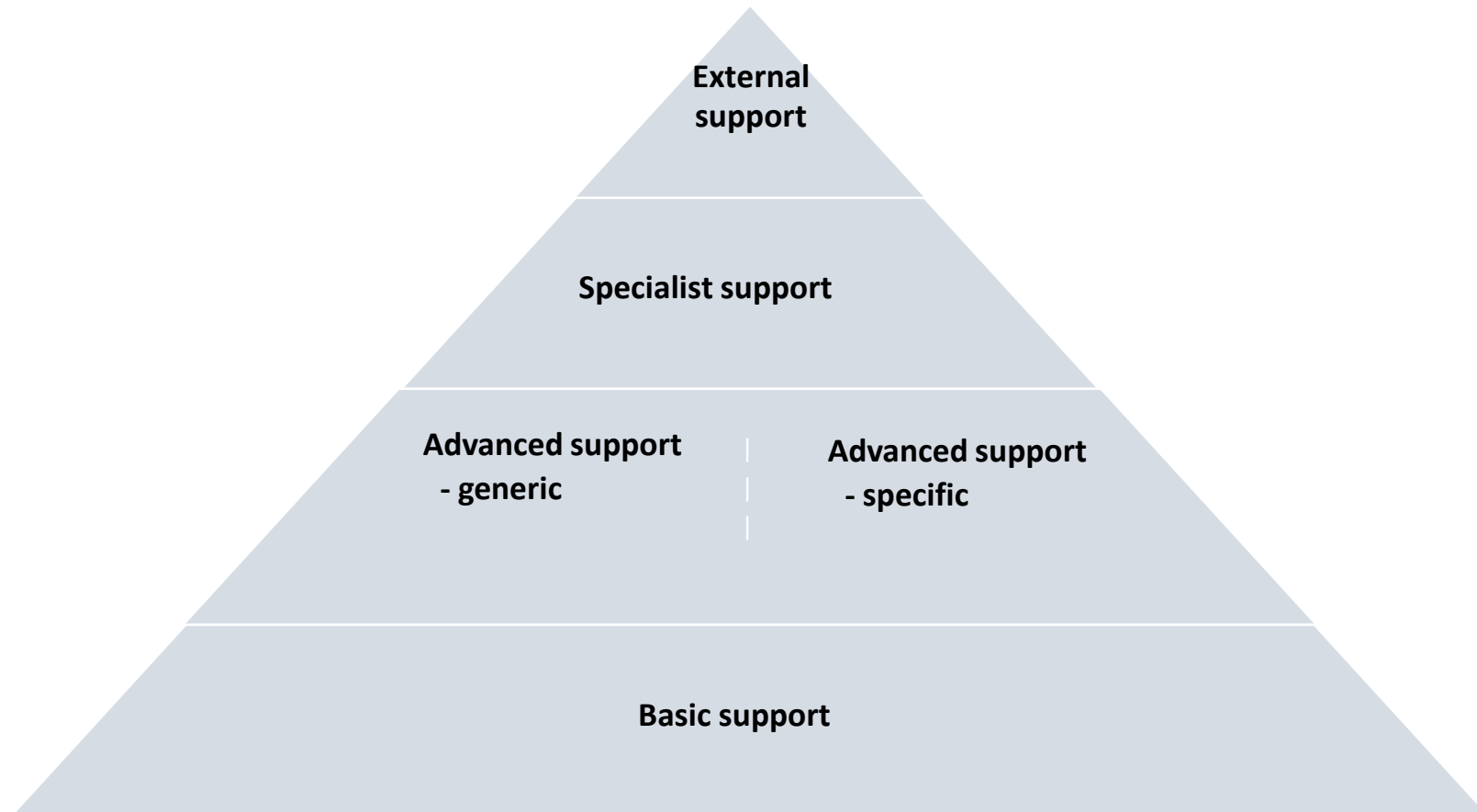
<https://www.ucll.be/international/student-services>

The background of the slide features a blurred image of two individuals running. On the left, a person in a dark blue long-sleeved shirt and jeans is running towards the right. On the right, another person in a dark blue uniform with a tactical vest is running in the same direction. The background is heavily blurred to convey a sense of rapid movement. In the top right corner, there is a graphic of a sunburst or a stylized sun with many thin, white, triangular rays radiating from a central circular area. The overall color palette is dominated by blues and greys, with a warm, golden light emanating from the sunburst graphic.

Support continuum and roles



Support continuum and roles





Different roles

- Basic support: lecturers
- Advanced support - **generic**
 - Student coach
 - Academic coach
 - Language coach
 - Study coach
- Advanced support - **specific**
 - Student office
- Specialist support
- External support





Specific role of the student office

- Support students with socio-emotional problems
- Support students with study issues and learning problems
- Talk to students for the purpose of redirecting them to another study programme or exit interview
- Approve disability certificates (e.g. autism, ADHD, ...)/learning disorders



Specific role of the student office

- Approve certificates for special status:
 - Recognised top level athlete
 - Artist
 - Working student
 - Student entrepreneur
 - Carer



Educational and exam facilities

- Examples of educational facilities:
 - Extended traineeship programme
 - Flexibility with regard to class attendance
 - Personalised deadlines for assignments or papers
 - Granting permission to make sound and video recordings during classes
- Examples of exam facilities:
 - Extra time during exams
 - Use of laptop with 'text to speech' software during exams
 - Extended exam schedule
 - Sitting exams in a low-stimulus environment